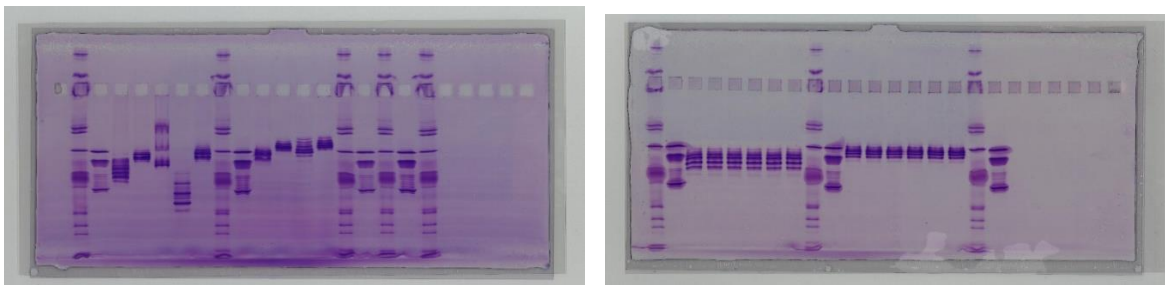


HPE™ BlueHorizon™ – The better Flatbed Electrophoresis System

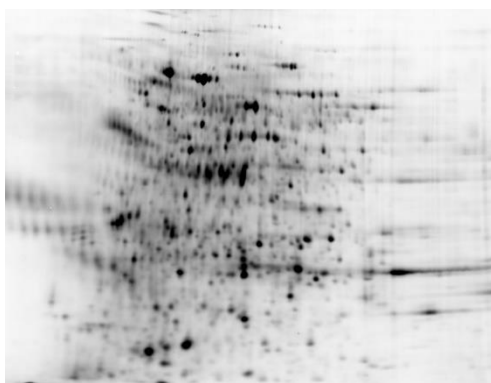
- Separation of antibodies and antibody conjugates by HPE™ horizontal isoelectric focusing on HPE™ BlueHorizon™ unit and horizontal precast FocusGel 3-10 24S, stained with SERVA Violet 17 staining kit:



Tobias Wagner (Roche Diagnostics GmbH, Penzberg/Germany):

"We regularly use the SERVA HPE BlueHorizon system for isoelectric focusing of our diagnostic antibodies and antibody conjugates and are excited about the reliability and high resolution performance of the system. The SERVA FocusGels 3 - 10 24S with prefabricated gel slots also work with samples that we could not focus using a vertical slabgel system. The SERVA Violet 17 staining kit also delivers the best results."

- Horizontal protein separation by HCP 2D Western Blot analysis:



Blot scan of 2D separated HCP Antigen – HCP sample was pre-labelled with SERVA Lightning Sci5, 1st dimension on SERVA IPG BlueStrip 3 – 10; 2nd dimension on 2D HPE™ Large Gel Kit NF 12,5 %; kindly provided by Biogenes (C. Geserick, 2017)



SERVA HPE™ BlueHorizon™ Electrophoresis Chamber, with BluePower™ Power Supply